

# ASH Planning Data Report

Presented by Meadows Mental Health Policy Institute (MMHPI). November 26, 2018.

## Austin State Hospital Data Summary

This document provides multiple data specific to Austin State Hospital, as provided by HHSC. Data include capacity and cost by bed type, budget and expenditures, select revenue sources, bed utilization (including breakdown by civil/voluntary and forensic), and other items. [Data updated Sept. 17, 2018]

- [File Download](#) (PDF)

Austin State Hospital Data Summary

Meadows Mental Health Policy Institute  
Austin State Hospital Data Summary (Sept. 17, 2018)

HHSC has provided data on capacity, costs and revenues, admission and length of stay, and patient characteristics (e.g., diagnosis, charges for forensic patients, and county of residence) for Austin State Hospital (ASH). Additionally, HHSC provided pending civil and forensic admissions (wait list) by county. In some cases, annual data for each year between 2015 and 2017 are included. In other cases, the data are descriptive of patients resident in ASH on a specific date.

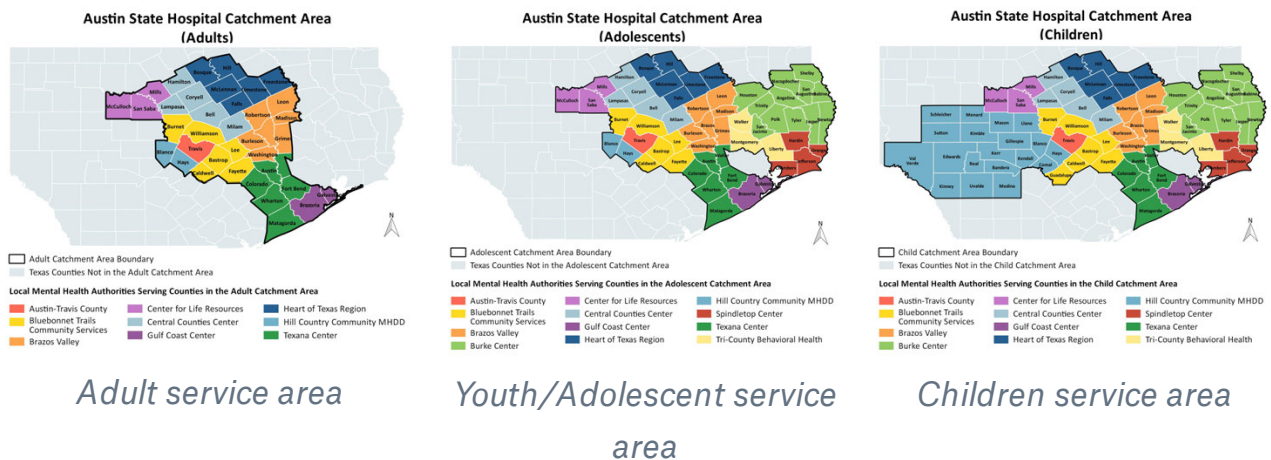
Capacity and Cost Data for Austin State Hospital<sup>1</sup>

The table below summarizes per bed cost and the total number of beds available (stratified by bed type) between fiscal years 2015 and 2018. There was no change in bed capacity between 2015 and 2017; however, 2018 capacity is lower than previous years. Also, bed cost for 2018 is not yet available.

Year	Bed Cost	Adult General	Geriatric/Specialty	Youth	Children	Forensic	Total
FY15	\$654	166	66	20	10	38	299
FY16	\$696	97	55	20	10	117	299
FY17	\$679	97	55	20	10	117	299

## ASH Catchment Area

The following maps show the boundaries for the ASH Catchment Area as distinguished by services to various age groups (children, youth, and adults).



# Population Projections

(Unrounded Estimates)

## Child and Youth Population Projections for the ASH Service Area (2018–2050)

Based on data from Texas Demographic Center (2014). *Population Projections Program* [2014 Population Projections: Age, Sex and Race/Ethnicity (ASRE) Population by Migration Scenario by Single Years of Age for 2010-2050 in One-Year Increments]. <http://txsdc.utsa.edu/data/TPEPP/Projections/Index> [added Nov. 19, 2018]

	Children Ages 6–11		Adolescents Ages 12–17		All Ages 6– 17	
Year	Population	% Change from 2018	Population	% Change from 2018	Population	% Change from 2018
2018	569,047		545,174		1,114,221	
2020	572,584	1%	557,283	2%	1,129,867	1%
2025	597,704	5%	570,393	5%	1,168,097	5%
2030	629,460	11%	589,306	8%	1,218,766	9%
2035	667,077	17%	618,617	13%	1,285,694	15%
2040	704,247	24%	656,638	20%	1,360,885	22%
2045	739,348	30%	697,797	28%	1,437,145	29%
2050	773,485	36%	736,421	35%	1,509,906	36%

## Adult Population Projections for the ASH Service Area (2018–2050)

Based on data from Texas Demographic Center (2014). *Population Projections Program* [2014 Population Projections: Age, Sex and Race/Ethnicity (ASRE) Population by Migration Scenario by Single Years of Age for 2010-2050 in One-Year Increments]. <http://txsdc.utsa.edu/data/TPEPP/Projections/Index> [added Nov. 19, 2018]

Year	Adults Ages 18 to	Older Adults	All Adults Ages 18 and
------	----------------------	-----------------	---------------------------

	64		Ages 65 to 84		Older	
	Population	% Change from 2018	Population	% Change from 2018	Population	% Change from 2018
2018	3,076,182		611,795		3,687,977	
2020	3,153,778	3%	674,549	10%	3,828,327	4%
2025	3,339,134	9%	845,699	38%	4,184,833	13%
2030	3,529,674	15%	1,011,526	65%	4,541,200	23%
2035	3,743,859	22%	1,150,084	88%	4,893,943	33%
2040	3,956,809	29%	1,294,303	112%	5,251,112	42%
2045	4,190,429	36%	1,430,988	134%	5,621,417	52%
2050	4,437,194	44%	1,574,400	157%	6,011,594	63%

## Patient Flows: Counties to Psychiatric Beds

The following breakdowns provide multiple ways of viewing the relationship between ASH-Area hospitals and the people utilizing those services—specifically, inpatient psychiatric beds. Each flow offers data on the counts of patients and the origin points for those patients. Age breakouts align with HHSC breakout ranges. The data are presented in multiple formats, including static maps, Excel files, and other charts.

**Data Currency:** 2015. Data are drawn from Texas Health Care Information Collection (THCIC) inpatient and outpatient data sets (which include ED information). See the [“Austin State Hospital Data Summary”](#) for more recent and comprehensive data on patient flows to Austin State Hospital.

**Note:** For the following data, whenever a county reports five or fewer patients, we have replaced the actual count with the value of 2. This value provides a

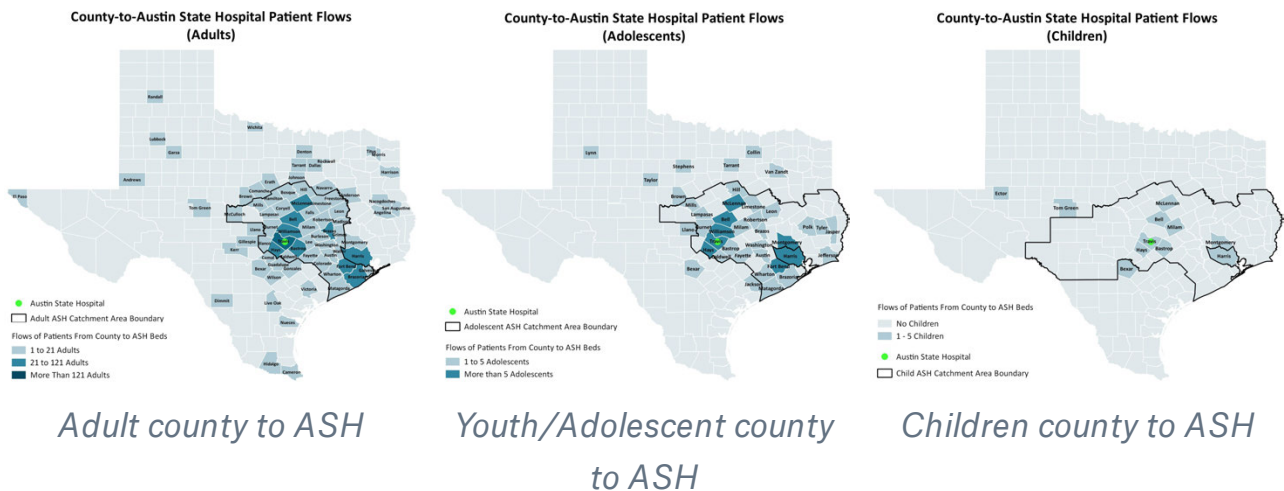
reasonable approximation of the count of patients while preserving anonymity (in accordance with the Data Use Agreement).

## Counties → Inpatient Psychiatric Beds

The following items present patient flow by county of origin for children, youth, and adults. These flows are presented for both the ASH Catchment Area and for Austin State Hospital itself.

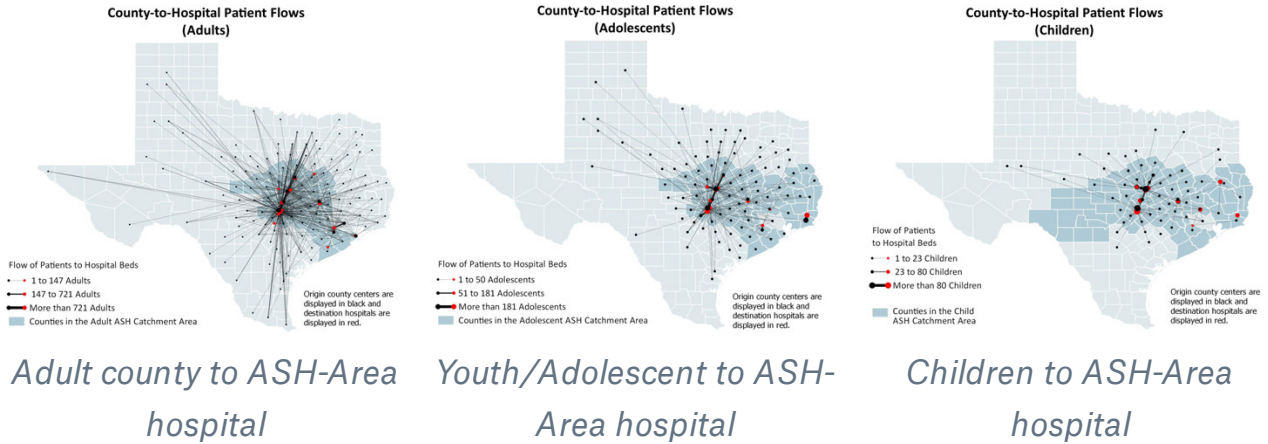
### County of Origin: Austin State Hospital

The images below show multiple representations of the connection between ASH and patients who utilize ASH inpatient psychiatric beds based on county of origin.



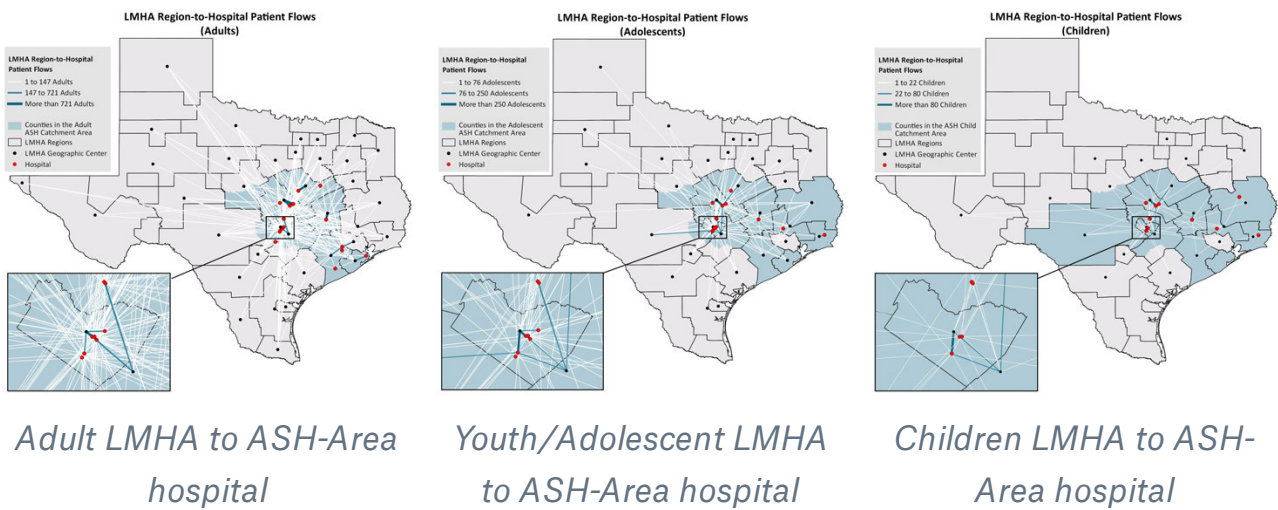
### County of Origin: ASH Catchment Area

The images below show multiple representations of the connection between the ASH Catchment Area hospitals and patients who utilize ASH-Area inpatient psychiatric beds based on county of origin.



## LMHA of Origin: ASH Catchment Area

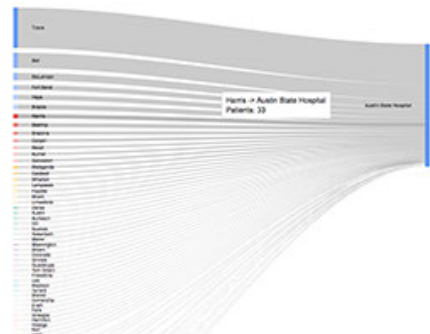
The images below show multiple representations of the connection between the ASH Catchment Area hospitals and patients who utilize ASH-Area inpatient psychiatric beds, based on LMHA.



## County of Origin: Austin State Hospital (Alluvial)

This chart shows the distribution and number of patients from both ASH and non-ASH originating counties flowing to the Austin State Hospital (for all ages).

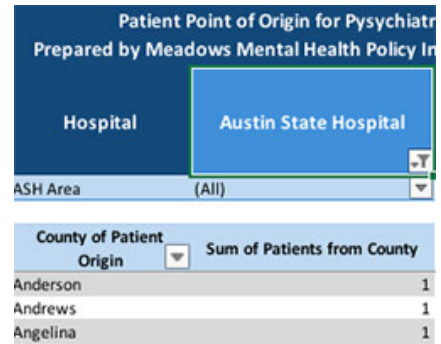
- [View](#) (Adult)
- [View](#) (Youth)
- [View](#) (Child)



## County of Origin: ASH Catchment Area (Excel)

The following Excel table provides multiple options for viewing the number of patients, by county of origin and age group, who were in ASH-Area hospital inpatient psychiatric beds. The files also allows a reverse search (beginning with hospital and viewing the point of origins for patients by age group, by county).

- [File Download](#) (Adult)
- [File Download](#) (Youth)
- [File Download](#) (Children)



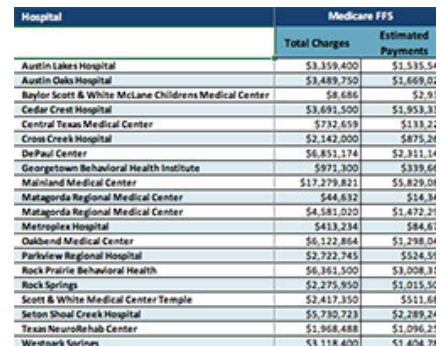
County of Patient Origin	Sum of Patients from County
Anderson	1
Andrews	1
Angelina	1

# Inpatient Charges and Estimated Payments

The following Excel file presents inpatient charges and estimated payments by payer type (Medicare FFS, Medicare Managed Care, Medicaid, Other Government, Third-Party Managed Care, Other Third Party, and Self Pay). Data are presented for adults, youth, and children, and the methodology document describing this process is available, below. Austin State Hospital charges and payments are presented in a separate document (“ASH Data Summary”).

**Data Currency:** CY2015. Data are drawn from Texas Health Care Information Collection (THCIC) inpatient and outpatient data sets (which include ED information). [Data updated Aug. 10, 2018]

- [File Download](#) (All Ages)
- [Methodology Document](#) (PDF)



Hospital	Medicare FFS	
	Total Charges	Estimated Payments
Austin Lakes Hospital	\$3,359,400	\$1,535.54
Austin Oaks Hospital	\$3,489,750	\$1,669.01
Baylor Scott & White McLane Childrens Medical Center	\$8,686	\$2.91
Cedar Crest Hospital	\$3,691,500	\$1,953.31
Central Texas Medical Center	\$732,659	\$133.21
Cross Creek Hospital	\$2,142,000	\$875.24
DePaul Center	\$6,851,174	\$2,311.14
Georgetown Behavioral Health Institute	\$971,300	\$339.64
Mainland Medical Center	\$17,279,821	\$5,829.08
Matagorda Regional Medical Center	\$44,632	\$14.34
Matagorda Regional Medical Center	\$4,581,020	\$1,472.21
Metrolinx Hospital	\$413,234	\$84.61
Oakbend Medical Center	\$6,122,864	\$1,298.04
Parkview Regional Hospital	\$2,722,745	\$524.51
Rock Prairie Behavioral Health	\$6,361,500	\$3,008.31
Rock Springs	\$2,275,950	\$1,015.56
Scott & White Medical Center Temple	\$2,417,350	\$511.64
Seton Shoal Creek Hospital	\$5,730,723	\$2,289.24
Texas Neurohab Center	\$1,968,488	\$1,096.21
Westmark Corliss	\$1,118,400	\$1,404.79

# Psychiatric Bed Capacity and Utilization

Of the hospitals in the area, 26 had data on psychiatric bed utilization. Our approach was to report capacity, estimate daily utilization, and depict the frequency of days in

which utilization approached or exceeded capacity at those 26 hospitals. Our analysis includes beds used by adults, youth, and children, but we are focusing on hospitals located in the ASH Catchment Area for adults and including children and youth information when relevant. In addition, we provide information for geriatric adults served in these hospitals, where geriatric is defined as those patients who are 65 years old or older. [Data updated Nov. 8, 2018]

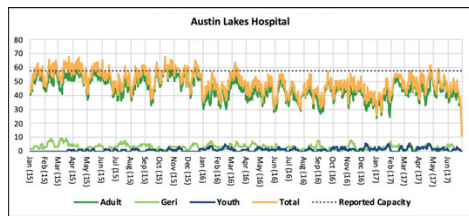
**Data Currency:** Jan. 2015–June 2017. Utilization data are drawn from Texas Health Care Information Collection (THCIC) inpatient and outpatient data sets (which include ED information). Capacity data are from the 2015 and 2016 American Hospital Association data set.

All charts, analysis, and other information are available in the full report. This report also provides supplementary information on Harris County hospitals.

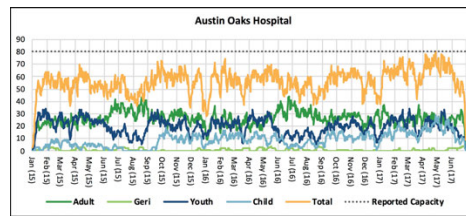
- [File Download](#)

### Daily Bed Use Versus Capacity

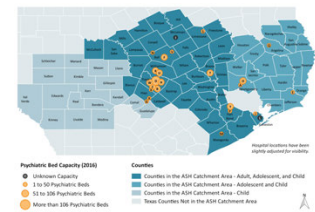
We have also prepared time series graphs for the ASH Catchment Area and individual hospitals. These graphs compare average daily capacity and average daily utilization for the 30-month period between Jan. 1, 2015, and June 30, 2017.



*Austin Lakes Hospital*



*Austin Oaks Hospital*



*ASH Catchment Area Capacity*

### Psychiatric Bed Utilization Versus Capacity

The following table provides preliminary findings for ASH Catchment Area hospitals. Utilization data for ASH itself is in a separate document (“[Austin State Hospital Data Summary](#)”).

Provider Name	City, County	Average Daily Utilization	Reported Capacity (2016)	Utilization as % of 2016 Capacity	% of the Days with Available Beds
Aspire	Conroe,	19	28	67%	99%

Hospital	Montgomery				
Austin Lakes Hospital	Austin, Travis	45	58	78%	99%
Austin Oaks Hospital	Austin, Travis	55	80	69%	100%
Austin State Hospital	Austin, Travis	See <a href="#">summary</a>	-	-	-
Cedar Crest Hospital	Belton, Bell	63	80	78%	100%
Central Texas Medical Center	San Marcos, Hays	0	13	0%	100%
Cross Creek Hospital	Austin, Travis	47	65	72%	97%
DePaul Center	Waco, McLennan	21	-	N/A	N/A
Devereux Texas Treatment Network	League City, Galveston	29	48	61%	100%
Georgetown Behavioral Health Institute	Georgetown, Williamson	67	106	63%	100%
Mainland Medical Center	Texas City, Galveston	20	-	N/A	N/A
Matagorda Regional Medical Center	Bay City, Matagorda	7	12	60%	95%
Metroplex	Killeen, Bell	12	43	29%	100%



Hospital					
Montgomery County MH Treatment Facility	Conroe, Montgomery	92	110	92%	100%
Oakbend Medical Center	Richmond, North Bend	11	24	45%	100%
Oceans Behavioral Hospital of Lufkin	Lufkin, Angelina	18	24	74%	97%
Oceans Behavioral Hospital of San Marcos	San Marcos, Hays	17	24	73%	96%
Parkview Regional Hospital	Mexia, Limestone	3	9	31%	100%
Rock Prairie Behavioral Health	College Station, Brazos	43	72	59%	100%
Rock Springs	Georgetown, Williamson	25	72	31%	100%
Scott & White Memorial Hospital	Temple, Bell	16	24	67%	99%
Seton Shoal Creek Hospital	Austin, Travis	69	79	88%	83%
Texas NeuroRehab Center	Austin, Travis	23	32	72%	100%

Westpark Springs	Richmond, Fort Bend	44	79	56%	100%
------------------	---------------------	----	----	-----	------

### Harris County Psychiatric Bed Utilization

The following Harris County utilization data are provided for reference (2015). We do not have age breakout data for Harris County hospitals. Time series graphs of Harris County hospitals for Jan. 1, 2015–June 30, 2017, are presented in the report.

Provider Name	Average Daily Utilization	Reported Capacity (2015)	Utilization as % of 2015 Capacity
Bayshore Medical Center	49	51	96%
Behavioral Hospital of Bellaire	90	104	86%
Cambridge Hospital*	6	90	6%
Cypress Creek Hospital	68	64	106%
Harris County Psychiatric Center	241	208	116%
Hopebridge Hospital	49	85	58%
Houston Behavioral Healthcare Hospital	29	88	33%
Houston Methodist Hospital	17	20	87%
Houston Methodist San Jacinto Hospital	9	18	49%
IntraCare North Hospital	53	86	61%
Kingwood Pines Hospital	68	82	83%
Lone Star Behavioral Health Cypress	9	24	38%
The Menninger Clinic	81	102	79%
Oceans Behavioral Hospital of Katy	8	48	16%
St. Joseph Medical Center	27	84	32%
Tomball Regional Medical	5	12	39%

Center			
West Houston Medical Center	13	14	96%
West Oaks Hospital	86	144	60%

\*closed July 2015

# Patient Flows: EDs to Inpatient Psychiatric Beds

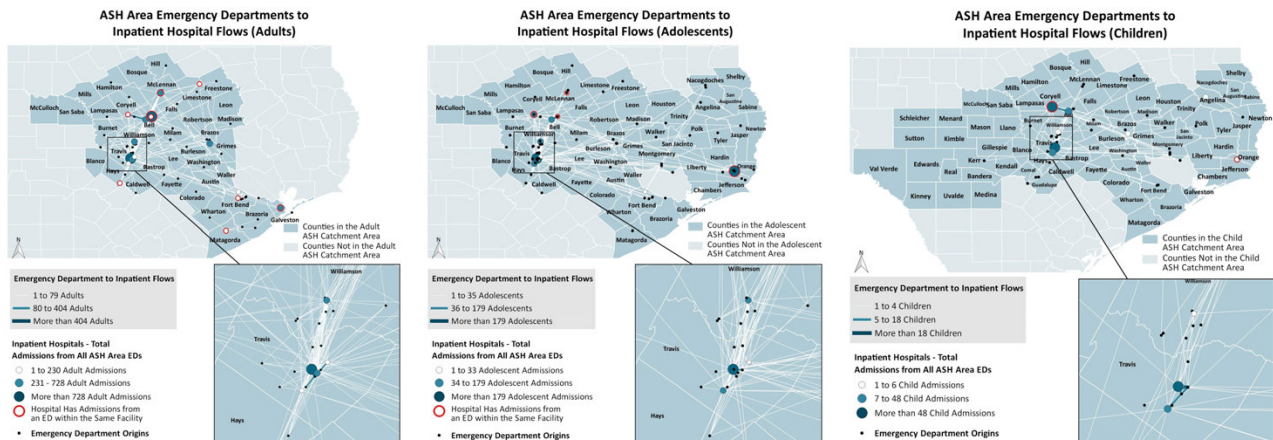
## EDs → Inpatient Psychiatric Beds

The following items present patient flow by ED of origin for children, youth, and adults. These flows are presented for ASH-Area hospitals with patients originating at EDs both within and outside the ASH Catchment Area. The data are presented in multiple formats, including static maps, Excel files, and other charts.

**Data Currency:** 2015. Data are drawn from Texas Health Care Information Collection (THCIC) inpatient and outpatient data sets (which include ED information).

### ED of Origin: ASH Catchment Area

The following images show patient flows for ASH-Area hospital inpatient psychiatric beds originating in an ED within the ASH Catchment Area. [Updated Aug. 20, 2018]



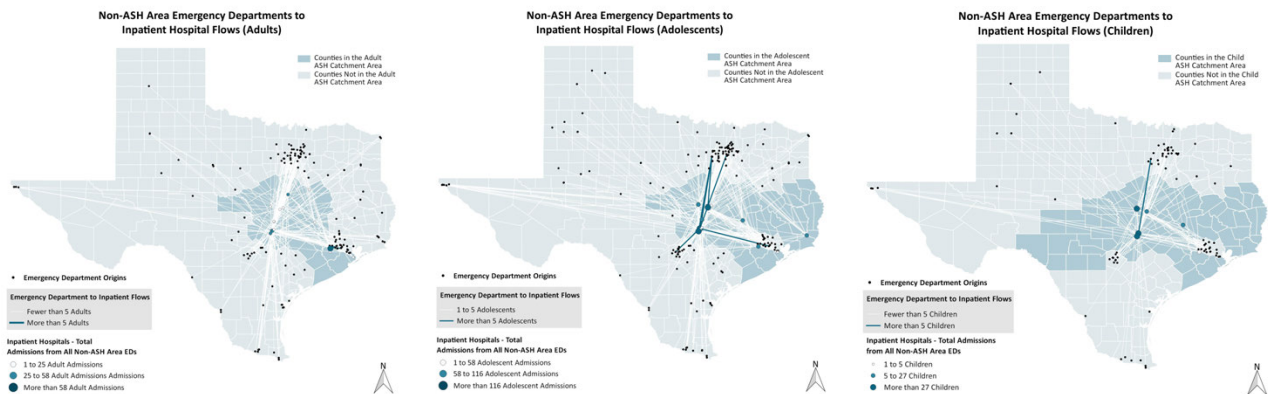
Adult ASH ED to ASH-Area hospital

Youth/Adolescent ED to ASH-Area hospital

Children ED to ASH-Area hospital

## ED of Origin: Non-ASH Catchment Area

The following images show patient flow for ASH-Area hospital inpatient psychiatric beds originating in an ED outside the ASH Catchment Area.



*Adult Non-ASH ED to ASH-Area hospital*

*Youth/Adolescent Non-ASH ED to ASH-Area hospital*

*Children Non-ASH ED to ASH-Area hospital*

## ED of Origin: ASH and Non-ASH (Alluvial)

This following charts show the relationship between ASH and Non-ASH EDs and ASH-Area hospital psychiatric beds. [Data updated Aug. 2, 2018]

- [ASH ED to ASH-Area Hospital \(Adult\)](#)
- [Non-ASH ED to ASH-Area Hospital \(Adult\)](#)
- [ASH ED to ASH-Area Hospital \(Youth\)](#)
- [Non-ASH ED to ASH-Area Hospital \(Youth\)](#)
- [ASH ED to ASH-Area Hospital \(Child\)](#)
- [Non-ASH ED to ASH-Area Hospital \(Child\)](#)



## ED of Origin (Excel)

The following Excel table provides multiple options for viewing the number of patients, by ED hospital of origin, who transferred to ASH-Area hospital inpatient psychiatric beds. The files also allow a reverse search (beginning with ASH hospital and viewing the point of origins for patients, by ED. [Data updated Aug. 2, 2018]

- [File Download \(Adult\)](#)
- [File Download \(Youth\)](#)

- [File Download](#) (Child)

ED of Origin for Inpatient Psychiatric Bed  
Prepared by Meadows Mental Health Policy Institut

Destination ASH Hospital (Inpatient Psych Beds)	Austin Lakes Hospital
ASH	(All)
Originating ED Hospital	
Sum of Patients from ED to Inpatient Beds	
Baylor Scott & White Medical Center Marble Falls	1
Cedar Park Regional Medical Center	11
Central Texas Medical Center	8
CHRISTUS Jasper Memorial Hospital	1
CHRISTUS Spohn Hospital Corpus Christi-South	1
Cogdell Memorial Hospital	1
Corpus Christi Medical Center-Northwest	1

## EDs Visits and Charges

### ED Use: 2016 ED Visits/Charges with a Mental Health ICD10 Code (Excel)

The following Excel table provides information on ASH Catchment Area hospitals (by county) and presents number of ED visits and charges (note that “charges” is not synonymous with payments).

**Data Currency:** 2016. Data are drawn from Texas Health Care Information Collection (THCIC) inpatient and outpatient data sets (which include ED information). [Updated Nov. 19, 2018]

- [File Download](#) (All Hospitals)

(1) First, select specific county or all counties. (2) Second, select specific hospital, below, or select the county name for the county-level summary. Sheet responds with the hospital's THCC ID. View below for visits and charge info.

County	Select Hospital	THCC ID
All	All Facilities	#N/A

All	Psychiatric Visits	Total Charges
Adults	23,804	\$80,377,145.90
Adolescents	3,273	\$10,275,442.81
Children	958	\$2,234,901.01
Total	28,035	\$92,887,489.72

Note: Make a selection in both drop-down menus (1) and (2) in order. The other tables may not reset values until new selections have been made.

### ED Use: 2016 ED Visits/Charges with SUD ICD10 Code (Excel)

The following Excel table provides information on area hospitals (by county) and presents number of ED visits and charges (note that “charges” is not synonymous with payments).

**Data Currency:** 2016. Data are drawn from Texas Health Care Information Collection (THCIC) inpatient and outpatient data sets (which include ED information). [Updated Nov. 19, 2018]

- [File Download](#) (All Hospitals)

(1) First, select specific county or all counties. (2) Second, select specific hospital, below, or select the county name for the county-level summary. Sheet responds with the hospital's THCC ID. View below for visits and charge info.

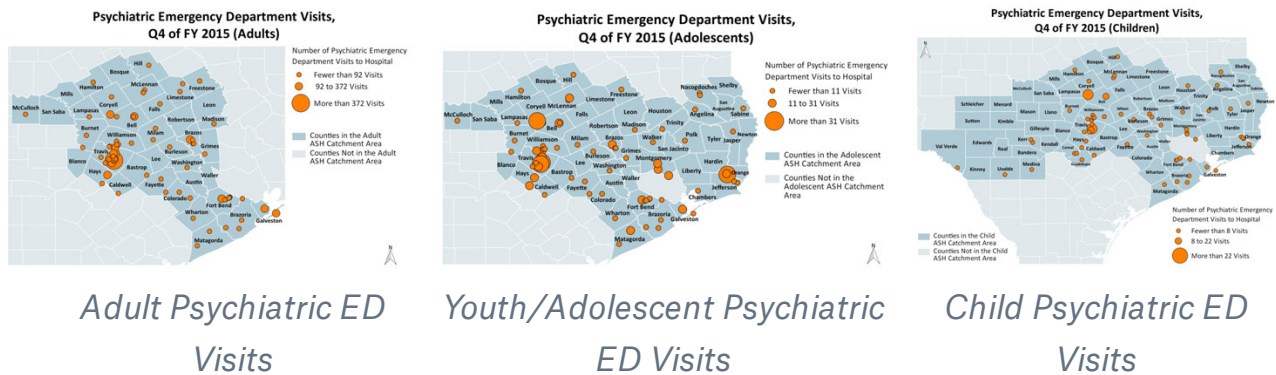
County	Select Hospital	THCC ID
All	All Facilities	#N/A

All	SUD Visits	Total Charges
Adults	14,277	\$66,753,763.52
Adolescents	966	\$3,745,941.49
Children	16	\$52,658.18
Total	15,259	\$70,552,364.19

Note: Make a selection in both drop-down menus (1) and (2) in order. The other tables may not reset values until new selections have been made.

### ED Use: Q4 2015 ED Visits with a Mental Health ICD10 Code (Static Maps)

The following maps shows the number of ED visits related to mental illness in Q4 2015 using ICD 10 codes. [updated Aug. 17, 2018]



# LMHA Data

## MBOW Tables

The following Excel table provides service information for ASH-Area LMHAs. The data are from the **Mental Retardation and Behavioral Health Outpatient Warehouse (MBOW)** and provide cost and utilization data searchable by LMHA, county, or catchment area. Data are from FY2017.

- [File Download](#)

Group By	Select Region	Region Code	Child	Adolescent	Adult
LMHA	Catchment Area	LMHA	Date	Date	Date
	Austin-Travis County Bluebonnet Trails Community Services Brazos Valley Burke Center Center for Life Resources Central Counties Center Gulf Coast Center Heart of Texas Region Hill Country Community MHDO Spindletop Center Texana Center Tri-County Behavioral Health				

## LMHA Survey Summary

This Excel workbook provides information about LMHA services in the ASH Catchment area. Data tables can be customized to a specific county or LMHA in the ASH catchment area, or to the entire catchment area. The data are based on the results of a survey sent to each LMHA in the summer of 2018, and data reflect FY2017.

- [File Download](#)

LMHA	Country	Adult	Adolescent	Child
Austin-Travis County	Travis	Yes	Yes	Yes
Bluebonnet Trails Community Services	Bastrop	Yes	Yes	Yes
	Burke	Yes	Yes	Yes
	Carlisle	Yes	Yes	Yes
	Fayette	Yes	Yes	Yes
Brazos Valley	Comal	Yes	Yes	Yes
	Concho	Yes	Yes	Yes
	Delaware	Yes	Yes	Yes
	Ellis	Yes	Yes	Yes
	Erath	Yes	Yes	Yes
	Franklin	Yes	Yes	Yes
	Haskell	Yes	Yes	Yes
	Hemphill	Yes	Yes	Yes
	Johnson	Yes	Yes	Yes
	Washington	Yes	Yes	Yes
Texana Center	Arizola	No	Yes	Yes
	McClintock	No	Yes	Yes
	Tommy	No	Yes	Yes
	Washington	No	Yes	Yes

---

# Prevalence Data

Prevalence Data reveal mental health need among people within the ASH Catchment Area. These data are estimates and presented for the catchment area, individual counties, and LMHAs. Prevalence files include ASH-Area-level summaries and “drilldowns” for specific diagnoses. Summaries include rounded estimates; drilldowns include unrounded estimates. Suicide counts are based on actual instances and are presented as counts (unless counts are below 10 individuals). **Data Currency:** 2016. Estimates are created by applied models (Holzer) and other methods to American Community Survey data sets. Suicide counts are from CDC (2016).

## Web-Based Prevalence (Adult, Children/Youth)

The following web-based (HTML) files allow easy access to Prevalence data through a web browser. Data are presented in two distinct files: children and youth (ages 6-17) and adults (18 and above). HTML files can be viewed online via the following links. They can also be downloaded in zip files for offline use. [minor terminology correction in Adult data, Nov. 12]

- [Online](#) (Adult)
- [File Download](#) (Adult)
- [Online](#) (Children/Youth)
- [File Download](#) (Children/Youth)

ASH Catchment Area Prevalence Adults	
ASH Catchment Area	
Counties	
Austin	Hays
Bastrop	Hill
Bell	Lampasas
Blanco	Lee
Bosque	Leon
Brazoria	Limestone
Brazos	Madison
Burleson	Matagorda
Burnet	McCulloch

## Excel Prevalence (Adult, Children/Youth)

The same Prevalence data are also available in Excel files, allowing for greater access to both rounded and unrounded estimates. Various tabs provide multiple options for selecting and receiving data.

- [File Download](#) (Adult)
- [File Download](#) (Children/Youth)

Aggregate ASH Catchment Area (Rounded)	
Mental Health Condition (Adults)	Prevalence
Total Adult Population	3,700,000
Population in Poverty	1,000,000
All Behavioral Health Needs	580,000
Mild Conditions	240,000
Moderate Conditions	170,000
Serious Mental Illness(SMI)	160,000
Broad Definition	580,000

## SUD Prevalence (Adult)

The following Excel file provides estimates for the number of adults who have Co-Occurring Psychiatric and Substance Use Disorders (COPSD) based on SMI and SUD data. Data are searchable by LMHA or county. [Updated Aug. 7, 2018]

- [File Download](#) (Adult)

(1) Select grouping category – county, LMHA, or catchment area – below.	(2) Select specific county, specific LMHA, or catchment area, below.	(3) Sheet responds with estimated number of people with coocuring SUD and SMI
Group By	Select Region	COPSD - SMI
County	Austin	181